



Capabilities Statement

Since 2014, we have continued to serve our partners with the required environmental expertise, dedication, and drive. Certified as a SB/DVBE & SDVOSB consulting firm, we are statewide, with headquarters in Fresno, with locations in Sacramento and Bakersfield/Santa Clarita. You will find our team working on large infrastructure, utility, and urban and rural construction projects. For example, our Client at the Bureau of Prisons had this to say about working with us, "Our experience was excellent. Their customer service from start to finish was outstanding!" Search for us on Google and read our reviews!



Headquarters:
1322 E. Shaw Ave. #400,
Fresno, CA 93710
559.547.8884 – Soarhere.com

Locations:
Sacramento 916.936.8287
Bakersfield 661.904.0733

SB/DVBE: 1786933
DUNS: 012089877
CAGE Code: 7J8W4
TIN: 47-1135739
CPUC: 1786933
NAICS Code: 541620
ISNetworld: 400-248924
CADIR: 1000052849

Core Competencies

Biological Resources

Biological and Habitat Surveys
Biological Construction Monitoring
Rare Plant Site Assessments
Aquatic Resources Investigations



Cultural Resources

Archaeology
Cultural Resources -Assessments/Monitoring
AB52/Section 106/SB18

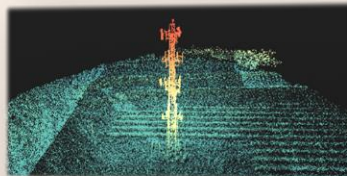


Environmental Compliance & Permitting

CEQA Initial Studies
Permitting (ESA, 401, 404, 1600, 2081)
Regulatory Compliance CEQA/NEPA
Environmental Site Assessments

Professional Services

Hazardous Waste Management Plans
Services for CEQA, NEPA, and ESA
UAV Inspection & Mapping
SPCC/SWPPP



Tenets

'Safely' to Safety

A core component of winning is a healthy team that starts with a safety-first outlook. We begin with a Safety Tailboard and work safely throughout the day.

Early is on time. On time is late.

On-schedule is not our goal at Soar Environmental. We are serious about our timeline and will do anything possible to ensure projects are completed ahead of schedule.

Govern policy – Provide a solution.

We analyze overlooked or unknown strategies to provide an operational advantage to our customers. We govern policy to provide streamlined, manageable solutions.

A toe shine is no shine.

This military motto alludes to the way boots are shined. We believe in superior work and produce quality documents to complete the job correctly the first time. Great results derive from competency, consistency, and knowledge.

Clients Include

Civil Engineering Firms; CA High-Speed Rail; Stantec; WSP AECOM; Cities/Counties; Caltrans; CPUC; Picayune Rancheria Chukchansi; Pacific Steel Group, Southern CA Edison; Private Developers



Contact: JSarquis@SoarHere.com





Past Performance

Soar Environmental continues to provide our partners with a wide array of environmental services throughout California, from multi-billion-dollar infrastructure projects to private development consulting. Below is a list of projects completed for our partners.

Public Agencies/Utilities

- BOP - SPCC/MS4
- CPUC/Caltrans - CEQA & NEPA Documentation
- ITP, BO, 401, 404, and 1600 Permit Amendments
- SCE -Biological Monitoring
- PG&E - System Hardening

Private Land Developers

- Initial Studies- CE; NOE; ND; MND
- Jurisdictional Delineations
- Protocol Surveys
- Phase I Archaeology Surveys
- Habitat Assessments and Conservation Plan
- Geological Explorations

Municipalities

- CEQA - Initial Study & SEIR
- Phase I ESAs
- Community Outreach
- Historic Building Impact Analysis
- Land Use Consistency Analysis

Tribal Partnerships

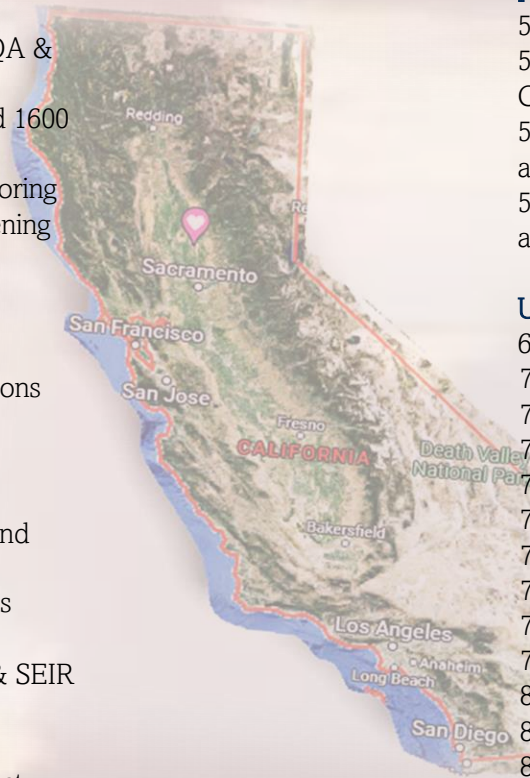
- NEPA – Cat. Ex. & EAs
- Phase I / II Archaeology
- Section 106 Consultation
- Phase I ESAs
- Housing Development Analysis
- Cultural Resources Studies

NAICS Codes

- 541620 – Environmental Consulting Services
- 541690 – Other Scientific and Technical Consulting Services
- 541990 – All Other Professional, Scientific, and Technical Services
- 541611 – Administrative Management and General Management Consulting Services

UNSPSC Codes

- 60104200 – Water Testing, Conservation Ecology
- 70151800 – Forestry Conservation Services
- 70161700 – Ecosystems
- 77000000 – Environmental Services
- 77100000 – Environmental Management
- 77101600 – Environmental Planning
- 77101700 – Environmental Advisory Services
- 77101800 – Environmental Auditing
- 77102000 – Environmental Reporting Services
- 77121700 – Water Pollution
- 80101600 – Project Management
- 81102500 – Permitting Services
- 81151700 – Geology
- 81151701 – Aerial Photography Services
- 81151705 – Archaeological Services
- 81151800 – Oceanography and Hydrology



Fresno – Sacramento – Bakersfield
559.547.8884 – JSarquis@SoarHere.com
SB - PW/DVBE #1786933

